



# **TDD GROUP LIMITED**

## **COMPANY PRESENTATION**

**Professional Manufacturer for  
Touchscreen & Display Products**

# PRESENTATION OUTLINE



<b>About Us</b>	2
• Corporate Information	3
• Global Business Network	4
<b>Products</b>	5
• Overview	6
• Product Lines	7
• Company & Products Certification	18
<b>Case Studies</b>	19
• Indoor Self-service Kiosks	19
Healthcare Kiosks   Touch Digital Signage   Stall Management AI HMI   Automated Fare Collection Systems   High Brightness Window Facing Displays	
• Outdoor Self-service Terminals	20
Outdoor Payment Kiosks   Parking Payment Kiosks   Sunlight Readable Displays   Self-service Car Wash Payment Kiosk   Industrial Automation   Outdoor Digital Signage	

## About us

Located in Shenzhen, China, **TDD GROUP LIMITED** is a professional and high-tech manufacturer for touchscreen & display products and OED & ODM services. Specializing in design, development, sales and manufacturing of (**Open Frame | Panel Mount | Closed Frame | Outdoor | Waterproof | Stainless Steel | Marine | Curved | Desktop | Commercial | Custom**) **Touch Monitors | Touch Panel PCs | Touch Panels | Touch Digital Signage | Touch POS Terminals | Windows Facing Displays | High Brightness TFT Displays | Industrial Box PCs | Custom Products | Accessories**), **TDD GROUP LIMITED** provides OEM & ODM solutions for every imaginable application, including Self-service, High Brightness Outdoor Displays, Parking Payment Systems, Healthcare, Industrial Automation, Outdoor Control, Gaming and many others.

With skillful workers, professional assembly lines, large production capacity and high quality products, we **TDD** become a reliable partner for customers from all over the world. Our goal is to help you do your business better and become your favorite Touchscreen & Display products supplier by delivering on our promises. We measure our success based on your satisfaction. We want you to be a **TDD** customer for life.

Integrity

Innovation

Focus

Development

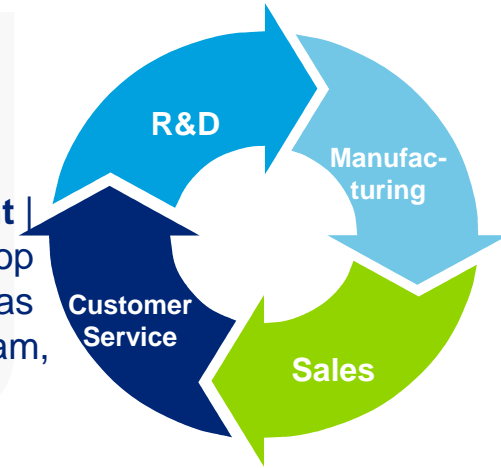


# Corporate Information



## Who We Are

Working with business partners such as BOE, SAMSUNG, LG, AUO, Intel, Rockchip, Ampire, IVO and ILITEK etc., and with worldwide clients in different industries, our products include a broad selection of (**Open Frame | Panel Mount | Closed Frame | Outdoor | Waterproof | Stainless Steel | Marine | Curved | Desktop | Commercial | Custom**) **Touch Monitors | Touch Panel PCs** from 7-98". **TDD** has a creative talent pool in both engineering and management. In its engineering team, more than 85% employees have around 10 years' experience in the field of touchscreen products.



**Parking Payment Systems**

**Healthcare**

**High Brightness Outdoor Displays**



**Gaming**

## Who We Serve

- Our products are used worldwide in every imaginable application, including retail, finance, healthcare, trade show, hospitality, transport and entertainment.

## What We Have

- Skillful workers, professional assembly lines, large production capacity and high quality products.

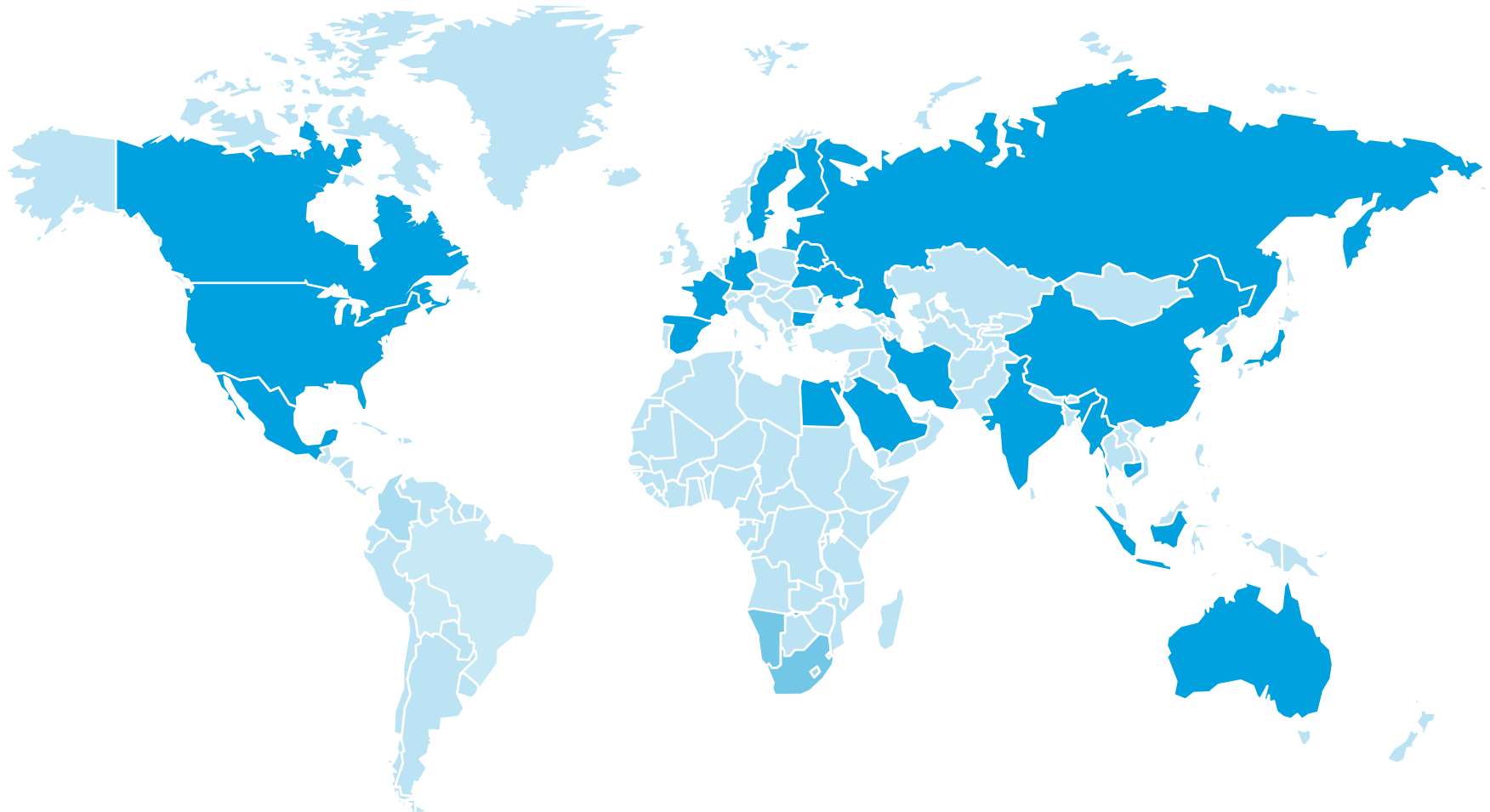


**Self-service**

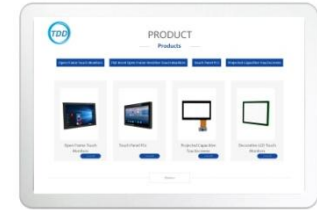
# Global Business Network: Products Sold In Over 30 Countries And Regions



- TDD Business Network
- Other Countries and Regions



# Products





## 10 Product Lines & Various Models

- **Line 1: Touch Monitors** 1.1-1.12 Standard | Industrial (Open Frame | Panel Mount | Closed Frame) | **Outdoor** | Waterproof | Stainless Steel | Marine | Curved | Desktop | Commercial (LED Framed) | Digital Signage | Round | Bar Type) | Display Modules | Medical | Custom
- **Line 2: Touch Panel PCs** 2.1-2.5 Standard | Industrial (Open Frame | Panel Mount | Closed Frame) | **Outdoor** | Waterproof | Stainless Steel | Custom
- **Line 3: Touch Panels** 3.1-3.2 **Standard** | Custom
- **Line 4: Touch Digital Signage** 4.1-4.2 Standard | Wood Frame
- **Line 5: Touch POS Terminals** 5.1 Standard
- **Line 6: Window Facing Displays** 6.1-6.5 **Wall Mounted** | Single Sided Hanging / Floor Standing | Double Sided Floor Standing / Hanging
- **Line 7: High Brightness TFT Displays** 7.1-7.7 10.1-23.8” | 21.5-65” Open Frame | **Optical Bonding** | Solar Powered | Bar Type | Full Array Local Dimming | Ultra High Brightness | Custom
- **Line 8: Industrial Box PCs** 8.1-8.2 X86 | **Android**
- **Line 9: Custom Products** 9.1-9.2 4.3-10.1” HDMI TFT Displays | Smart Central Control Systems | Outdoor Digital Signage
- **Line 10: Accessories** 10.1-10.2 Stands | Peripherals

# Line 1: Touch Monitors (7-65")

## 1.1: Standard Touch Monitors (7-43"): Perfect for Indoor Kiosks



**Features** • With 3mm tempered glass, **Light Steel / Aluminum Frame/Case**, IP65(front), flexible mount

## 1.2: Industrial Touch Monitors (7-65"): Perfect for Industrial Automation



**Features** • With 3mm tempered glass, **Rugged TFT Panel**, **Sturdy Aluminum Frame / Case**, IP65(front)



# Line 1: Touch Monitors (7-65")

## 1.3: Outdoor Touch Monitors (7-65"): Designed for Outdoor Kiosks



Rear Mount

Panel Mount

**Features** • With High Bright TFT, AG&UV Glass, Optical Bond, Smart Temp. Control, Auto Dimmer

## 1.4: Waterproof Touch Monitors (7-21.5"): Designed for Outdoor Control



Rear Mount, Aluminum

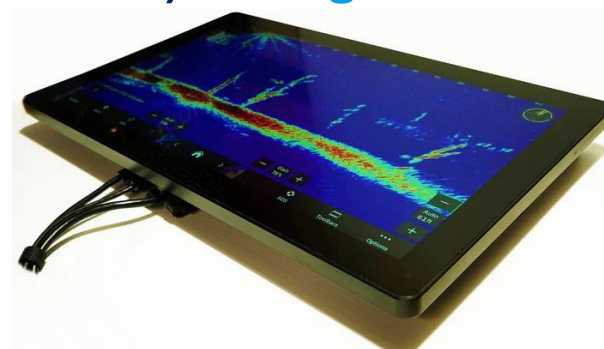
Closed Frame, 304 Stainless Steel

**Features** • IP65/67 fully enclosed, Optical Bond, Aluminum/Stainless Steel with M12 Metal I/O Ports

# Line 1: Touch Monitors (7-65")

**1.5: Stainless Steel Touch Monitors (7-21.5")**  
**Perfect for KDS (Kitchen Display System)**

**1.6: Marine Touch Monitors (10.1-21.5")**  
**Designed for Boats**



**Features** • Closed Frame, Optical Bond, Rugged & Easy to Clean 304 Stainless Steel Enclosure & full Metal Jacket

**Features** • Closed Frame, IP67 fully Aluminum Enclosed, Marine Grade

**1.7: Curved Touch Monitors (23.-55")** **For Gaming** **1.8: POS Touch Monitors**



**Features** • C/J-type, Customized LED, 2-4K, Sturdy Steel/Aluminum

**Features** • Aluminum Stand



# Line 1: Touch Monitors (7-65")

## 1.9: Commercial Touch Displays (7-86") : For Commercial Applications



**LED Framed**

**Closed Frame**



**Digital Signage**

**Aluminum Closed Frame**



**Round**

**Aluminum Frame**



**Bar Type**

**Aluminum Closed Frame**

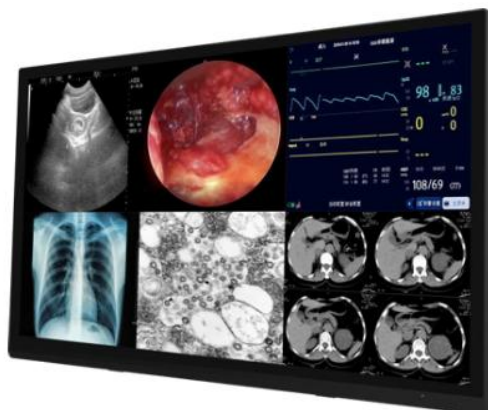
### 1.10: Touch Modules

### 1.11: Medical

### 1.12: Dustproof



**Custom, Kits Form**



**Optical Bond, Gamma Correction**

**Rear Mount**



**M12 Ports, Closed Frame**

# Line 2: Touch Panel PCs (7-65") / Windows | Android



## 2.1-2.2: Standard | Industrial Touch Panel PCs: Indoor Kiosk | Factory



Rear Mount



Front Mount



Panel Mount (Front Buttons)



Closed Frame

**Features** • 3mm tempered glass, Light | Sturdy Steel/Aluminum Frame/Case, IP65(front), flexible mount

## 2.3: Outdoor Touch Panel PCs (7-65"): Perfect for Outdoor Kiosks



Rear Mount



Panel Mount

**Features** • With High Bright TFT, AG&UV Glass, Optical Bond, Smart Temp. Control, Auto Dimmer



## Line 2: Touch Panel PCs (7-65")

### 2.4: Waterproof Touch Panel PCs (10.1-21.5"):

### 2.5: Stainless Steel Touch Panel PCs(7-21.5"):

For KDS



**Features** • IP65 / IP67 Fully Enclosed, Optical Bonding, Aluminum/Stainless Steel Case with M12 Metal I/O Ports

**Features** • Closed Frame, Optical Bond, Rugged&Easy to Clean 304 Stainless Steel Enclosure & full Metal Jacket

### 2.6: Custom Touch Panel PCs (Custom Sizes):



**Features** • 6mm(IK7) Tempered AG &UV Glass, High Bright, Optical Bond, Smart Temp. Control, Auto Dimmer

**Features** • 5mm Glass(replaceable), fully Enclosed , VESA Mount, Dust-proof with Aviation Plug & RFID reader.



# Line 3 | 4 | 5: Touch Panels (7-65") | Touch Digital Signage (7-98") | POS Terminals (15-21.5"): For System Integration | Commercial Display | Retail



## 3.1: Standard | Custom Touch Panels



**Features** • Durable Glass, Bond & surface Treatments Option



**Features** • Custom Size & Shape

## 4.1: Touch Signage    4.2: Wooden Frame Touch Signage    5.1: Touch POS Terminals



**7-98", Aluminum Closed Frame**



**With Touch, Beveled**



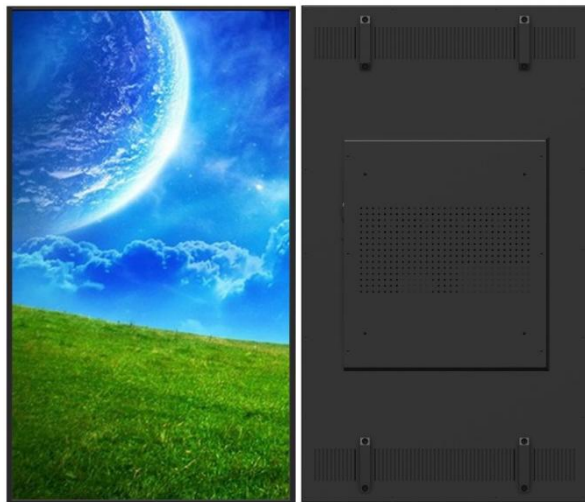
**7-98", Aluminum Closed Frame**



# Line 6: Window Facing Displays (21.5-86"): Perfect for Outward-facing Direct Sunlight Environment



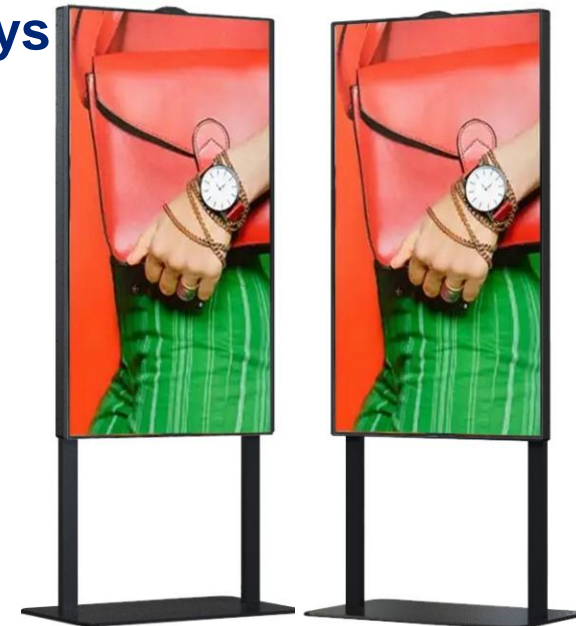
## 6.1-6.5: Single | Double Sided Window Facing Displays



Wall Mount



Hanging



Double Side Floor Stand



Floor Stand

2000 ~ 5000 nits, Sunlight Readable, Wide Operating Temp., 18mm Sleek Bezel, Smart Temp. Control, Ambient Light Sensor



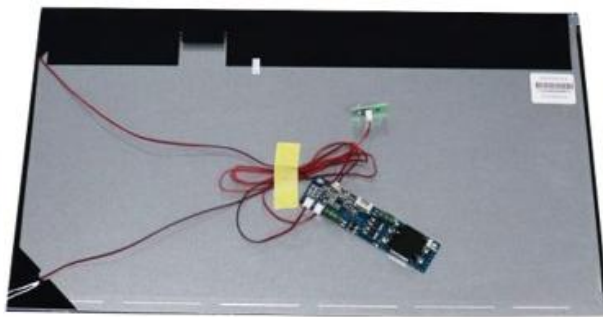
Double Side Hanging 14



# Line 7: High Brightness TFT Displays (10.1-65"): Perfect for Bright Environment



## 7.1: 10.1-23.8" High Bright Displays



## 7.2: 21.5-65" High Bright Displays



## 7.3-7.4: High Bright Optical

## Bond | Solar Powered Displays | Splicing Displays

## 7.5-7.9: (Ultra) High Bright Bar Type | Local Dimming



**1000-5000 nits, Sunlight  
Readable, Wide Operating  
Temp., Dimming Control,  
Kits/ Open Frame/Custom**



# Line 8: Industrial Box PCs (Windows | Android)



# Line 9: Custom Products

## 8.1: Industrial Box PCs



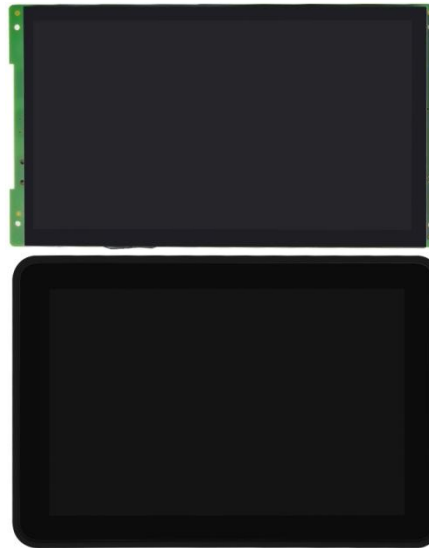
Multiple I/O & Expansion Slots, Rugged Components, Aluminum Case and Fanless Cooling Systems

## 9.1: HDMI TFT Displays



1.44-10.1", High Bright/PCAP/ Option

## 9.2: Smart Central Control System 9.3: Outdoor Digital Signage



4.3-10.1", Android, Open Frame, Rear & Front Mount Design



49-55", 2000-5000 nits, Full IP56, IK10, M12 Metal I/O Connectors

# Line 10: Accessories: Stands & Mounts | Peripherals



## 10.1: Stands & Mounts

For Standard & Custom (Closed Frame Series) Touch Monitors (7-27")



For Custom (Closed Frame Series) Touch Monitors (7-21.5")



For LED Framed Curved PCAP Touch Monitors (7-27")



## 10.2: Peripherals



Magnetic Stripe Readers



Touch Stylus



EU Plug      AU Plug      UK Plug      US Plug

Power Supply



# Company & Products Certification



**TOBY** Shenzhen Toby Technology CO., Ltd.  
 1/F., Building 8, Renshengsheng Industrial Zone, Longhua,  
 Xixiang, Baoan District, Shenzhen, Guangdong, China  
 Tel:0755-26099287 Fax:0755-26099100 www.toby.com.cn

**CERTIFICATE OF CONFORMITY**  
 Certificate No.: TBC-C-202304-0267-1

Applicant : TDD GROUP LIMITED  
 Address : T2-B608, Shenzhen Software Park, No.22 Gaoxin South 7th Road,  
 Nanshan District, Shenzhen 518057, China  
 Manufacturer : TDD GROUP LIMITED  
 Address : T2-B608, Shenzhen Software Park, No.22 Gaoxin South 7th Road,  
 Nanshan District, Shenzhen 518057, China  
 Product : Touch Monitor  
 Brand Name : ---  
 Model(s) : ---

TDD-OFTM-BF170, TDD-OFTM-BF70, TDD-OFTM-BF80,  
 TDD-OFTM-BF101, TDD-OFTM-BF104, TDD-OFTM-BF121,  
 TDD-OFTM-BF133, TDD-OFTM-BF140, TDD-OFTM-BF150,  
 TDD-OFTM-BF156, TDD-OFTM-BF185, TDD-OFTM-BF190,  
 TDD-OFTM-BF215, TDD-OFTM-BF238, TDD-OFTM-BF270,  
 TDD-OFTM-BF320, TDD-OFTM-BF430, TDD-OFTM-FB170P,  
 TDD-OFTM-BF101H0, TDD-OFTM-BF104H0, TDD-OFTM-BF121H0,  
 TDD-OFTM-BF156H0, TDD-OFTM-BF156H0, TDD-OFTM-BF190H0,  
 TDD-OFTM-BF215H0, TDD-OFTM-BF320H0, TDD-OFTM101,  
 TDD-OFTM156, TDD-OFTM215, TDD-OFTM320  
 TDD-OFTMPTM1DTM-BF/FB/PM/CF/DP/LF/LC/IDK/PC/IRT\*\*\*\*\*  
 (\*0-9, A-Z, a-z, HO, HR, WV, -DP, -AG, - or blank for marketing use only)

Test Standards:  
 EN 55032:2015/A11:2020  
 EN IEC 61000-3-2:2019/A1:2021  
 EN 61000-3-3:2013/A2:2021  
 EN 55035:2017/A11:2020

The EUT described above has been tested by us with the listed standards according to the Council Directive 2014/30/EU relating to electromagnetic compatibility, and found in compliance with all essential requirements of the Directive. It is possible to use CE marking to demonstrate the compliance with the EMC Directive.  
 The certificate applies to the tested sample above mentioned only and shall not imply an assessment of the whole production. It is only valid in connection with the test report number: TBR-C-202304-0267-1.

**CE**   
 Justin Zhang  
 (Manager)  
 Jun. 09, 2023

**TOBY** Shenzhen Toby Technology CO., Ltd.  
 1/F., Building 8, Renshengsheng Industrial Zone, Longhua,  
 Xixiang, Baoan District, Shenzhen, Guangdong, China  
 Tel:0755-26099287 Fax:0755-26099100 www.toby.com.cn

**CERTIFICATE OF CONFORMITY**  
 Certificate No.: TBC-C-202304-0267-2

Applicant : TDD GROUP LIMITED  
 Address : T2-B608, Shenzhen Software Park, No.22 Gaoxin South 7th Road,  
 Nanshan District, Shenzhen 518057, China  
 Manufacturer : TDD GROUP LIMITED  
 Address : T2-B608, Shenzhen Software Park, No.22 Gaoxin South 7th Road,  
 Nanshan District, Shenzhen 518057, China  
 Product : Touch Monitor  
 Brand Name : ---  
 Model(s) : ---

TDD-OFTM-BF170, TDD-OFTM-BF70, TDD-OFTM-BF80,  
 TDD-OFTM-BF101, TDD-OFTM-BF104, TDD-OFTM-BF121,  
 TDD-OFTM-BF133, TDD-OFTM-BF140, TDD-OFTM-BF150,  
 TDD-OFTM-BF156, TDD-OFTM-BF185, TDD-OFTM-BF190,  
 TDD-OFTM-BF215, TDD-OFTM-BF238, TDD-OFTM-BF270,  
 TDD-OFTM-BF320, TDD-OFTM-BF430, TDD-OFTM-FB170P,  
 TDD-OFTM-BF101H0, TDD-OFTM-BF104H0,  
 TDD-OFTM-BF121H0, TDD-OFTM-BF156H0,  
 TDD-OFTM-BF156H0, TDD-OFTM-BF190H0, TDD-OFTM101,  
 TDD-OFTM156, TDD-OFTM215, TDD-OFTM320  
 TDD-OFTMPTM1DTM-BF/FB/PM/CF/DP/LF/LC/IDK/  
 PC/IRT\*\*\*\*\*(\*0-9, A-Z, a-z, HO, HR, WV, -DP, -AG,  
 - or blank for marketing use only)

Test Standard(s):  
 FCC 47 CFR Part 15 Subpart B

This device complies with Part 15 of the FCC rules, operation is subject to the following two conditions:  
 (1) This device may not cause harmful interference, and  
 (2) This device must accept any interference received, including interference that may cause undesired operation.  
 This is the results of test that was carried out by Shenzhen TOBY Technology Co., Ltd. From the submitted tiny samples of the product is conformity with the specification of the respective standards.

**FCC**   
 Justin Zhang  
 (Manager)  
 Jun. 09, 2023

**QUALITY MANAGEMENT SYSTEM CERTIFICATE**

Certificate No.: 46622Q1011610R05

This is to certify that management system of  
**TDD GROUP LIMITED**  
 Unified social credit code: 91440300MASECWRLSX

Registered Address : 15F-1, Western Coast Mansion, No.2251 Nanhai Avenue, Nanshan District, Shenzhen, China  
 Business Address: 15F-1, Western Coast Mansion, No.2251 Nanhai Avenue, Nanshan District, Shenzhen, China

Management system in line with:  
**GB/T19001-2016 /ISO9001:2015**

Scope of certification:  
 Research and development (R&D) and sales for touch monitors, touch panel PCs, LED monitors and industrial PCs

Date of issue : April 06, 2022  
 Date of expire : April 05, 2025

It is valid for use within the scope of administrative and qualification permission and the period of validity stipulated by the state. The certificated organization shall be subject to supervision and audit on schedule within the period of validity of the certificate. It is valid for use after passing the supervision and audit. The information of this certificate can be found on the official website of the national certification and Accreditation Administration ( www.cnca.gov.cn ) Inquiry.

General manager

**Shenzhen Zhongxin certification testing Co., Ltd**  
 Address: 401-b-5A, Xianke electromechanical building, baguasi Road, Futian District, Shenzhen  
 Website: [www.szkcgc.com](http://www.szkcgc.com) Telephone: 0755-86568634

This certificate is responsible for testing sample only.  
 Please refer to the corresponding test report to get testing process and data.

**C E R T I F I C A T E**

**ATTESTATION Certificate of Compliance**

Technical file of the company mentioned below has been inspected and audit has been completed successfully  
 The RoHS Directive 2015/863/EU amending Annex II to Directive 2011/65/EU has been taken as references for these processes.

Certificate's Holder : TDD GROUP LIMITED  
 Address : T2-B608, Shenzhen Software Park, No.22 Gaoxin South 7th Road,  
 Nanshan District, Shenzhen 518057, China  
 Manufacturer : TDD GROUP LIMITED  
 Address : T2-B608, Shenzhen Software Park, No.22 Gaoxin South 7th Road,  
 Nanshan District, Shenzhen 518057, China  
 Product Name : Touch Monitor  
 Product Model (S) : See page 2  
 Trade Mark : N/A  
 Related Directive : Directive 2015/863/EU amending Annex II and (EU)2017/2102 of Directive 2011/65/EU

Certificate Number : HK2306166306R  
 Report No. : HK2306166306-1RR  
 Issue date : June 27, 2023

Justin Zhang  
 (Manager)

The information of the certificate can be checked through [www.cer-mark.com](http://www.cer-mark.com). The CE mark which is shown on the certificate can only be used under the conditions that the products complete with all of the relevant Directives of EC Declaration of Conformity. The Manufacturer should be responsible for the internal production control so that the products complied with the essential requirements of the above mentioned Directives). Certificate holder must notify all changes to the original certification laboratory of HJAK.

**Shenzhen HJAK Testing Technology Co., Ltd.**  
 Add: 13/F., Building B2, Jiefang Zhongxing Zhixun Innovation Park, Huang, Futian Street, Bao'an District, Shenzhen, Guangdong, China  
 Tel: 400-700-200-9897 <http://www.hjak-test.com> Postcode: 518102 E-mail: [www@hjak-test.com](mailto:www@hjak-test.com)

CE

FCC

ISO

RoHS

# Case Studies – Indoor Self-service Kiosk



Healthcare Kiosks



Touch Digital Signage



Stall Management AI HMI



Automated Fare Collection Systems



High Brightness Window Facing Displays

Copyright © 2019 TDD GROUP LIMITED All rights reserved.



Healthcare Kiosks 19



# Case Studies – Outdoor Self-service Terminals



**Outdoor Payment Kiosks**



**Parking Payment Kiosks**



**Sunlight Readable Kiosks**



**Self-service Car Wash Payment Kiosks**



**Industrial Automation**



**Outdoor Digital Signage**

# Thank You!

Contact us

**TDD GROUP LIMITED**

Add: T2-B608, Shenzhen Software Park,  
No.22 Gaoxin South 7th Road, Nanshan  
District, Shenzhen 518057, China

E-mail: [sales@tddtouch.com](mailto:sales@tddtouch.com)

Tel / Fax: +86 755 86724815

[Http://www.tddtouch.com](http://www.tddtouch.com)

